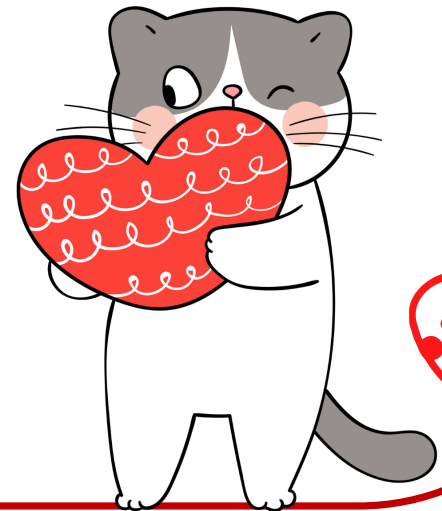
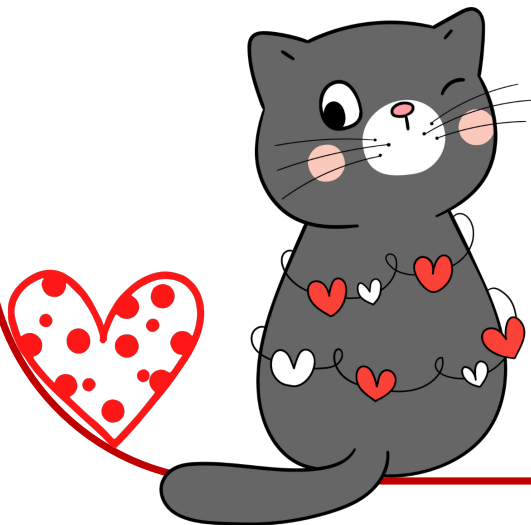




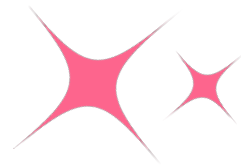
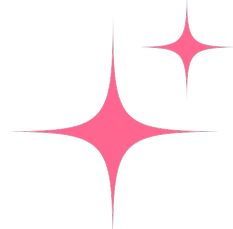
Valentine's Day

Activities

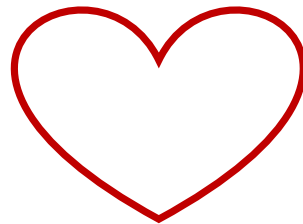
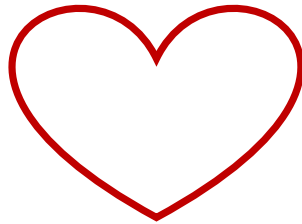
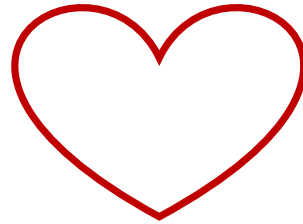
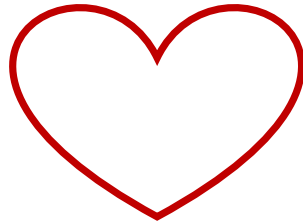
Mrs. Lena, M. Ed.



Draw a square  around each heart and  
a triangle  around each Valentine's card.



Complete the patterns below:



Complete the patterns below:



# Addition Fun: Tic-Tac-Toe

$5+2$	$1+2$	$2+2$
$3+4$	$2+5$	$8+2$
7	$6+2$	9



$3+2$	$1+4$	$7+2$
$5+1$	$2+4$	$3+3$
4	$6+2$	5

$3+2$	$1+7$	$2+5$
$5+1$	$1+4$	$1+3$
8	$6+2$	5

